



**REPORT
ON
CENSUS
OF
MEGHALAYA STATE GOVERNMENT
EMPLOYEES**

AS ON 31ST MARCH 2006

13TH EDITION

**GOVERNMENT OF MEGHALAYA
DIRECTORATE OF ECONOMICS & STATISTICS
SHILLONG**

P R E F A C E

The Census of Government Employees as on 31st March 2006 is the thirteenth in the series. The main objective of the report is to assess the quantum of employment in the State Government departments/offices and also to present an analysis characterised by their Status, Permanent and Temporary, Caste/Tribe, Sex, Community, Urban-Rural, Group of Employees, Educational Qualification, Pay Structure and other related information.

The Directorate of Economics & Statistics acknowledges with thanks the co-operation of various departments in providing the required information and hopes that they will continue to help in course of subsequent censuses.

The report has been compiled, tabulated and presented by the staff of census section under the able guidance and supervision of Sarvasree V.E. Iawphniaw Deputy Director and B.D.Choudhury, Research Officer.

Any suggestion for further improvement of the report are most welcome.

Dated Shillong, the ____ January 2009.

A Marbaniang
DIRECTOR
Economics & Statistics,
Meghalaya, Shillong.

CONTENTS

Sl. No	ITEM	Pg. No.
1.	The highlights of the report	1-3
THE MAIN FEATURES OF THE REPORT		
2.	Trend in Meghalaya Government Employees	4
3.	Trend in Meghalaya Government by sex	5
4.	The number of Permanent and Temporary Employees by Status as on 31 st March 2006	6
5.	Group-wise distribution of Government Employees	7
6.	Percentage increase or decrease of Employees by Caste/Tribe	8
7.	Distribution of Scheduled Tribe Employees according to status by Main Tribes	8
8.	District-wise number of Meghalaya Government Employees as on 31 st March 2000, 2003 and 2006	9
9.	Department-wise number of Permanent and Temporary Employees by Status	9-10
10.	Number of Employees according to Sex and District of Posting	11
11.	Percentage Distribution of Employees according to status and urban-rural break-up	11
TABLES		
12.	List of Tables	12
13.	Tables	13-31

TABLES

LIST OF TABLES

Sl. No	List of Tables	Pg. No.
1.	Census of Meghalaya Government Employees at a glance.....	13
2.	Population per State Government Employee by District.....	14
3.	Growth of Male and Female Employees.....	14
4.	Number of State Government Employees according to status and sex as on 31 st March 2006.....	15
5.	Number of Employees by Status and District of Posting.....	15
6.	Department-wise Percentage Distribution of Employees by sex.....	16
7.	Department-wise distribution of Employees by Status and sex.....	17
8.	Classification of Permanent and Temporary Employees by Sex.....	18
9.	District-wise Number of Employees according to Status and Tenure of Service.....	18
10.	Number of Female Employees by Status during 2000, 2003 and 2006.....	19
11.	Trend in Employment of Women by Meghalaya Government.....	19
12.	District-wise break-up of Employees according to Sex and Group.....	20
13.	Group-wise Distribution of Government Employees according to Rural - Urban.....	20
14.	District-wise break-up of Employees according to Rural - Urban.....	21
15.	Number of Employees according to Caste/Tribe.....	21
16.	Distribution of Employees according to Caste/Tribe by Departments.....	22
17.	Number of Employees by Caste/Tribe according to Status and Tenure of Service.....	23
18.	District-wise Distribution of Employees according to Caste/Tribe.....	23
19.	Distribution of Scheduled Tribes in Meghalaya Government Service by Departments.....	24
20.	District-wise Distribution of Scheduled Tribe Employees.....	25
21.	Number of Employees according to Status and Educational Qualification.....	25
22.	Number of Employees according to the Scales of Pay as on 31 st March 2006.....	26
23.	Distribution of Employees according to various Pay-Ranges.....	27
24.	Distribution of Employees according to Status and Age-Group.....	28
25.	Group-wise Basic Pay Range Distribution of State Government Employees by Districts..	29
26.	Statement of the department-wise distribution of the number of posts.....	30
27.	Group-wise classification of Technical and Clerical employees by Sex.....	31
28.	Group-wise distribution of employees according to monthly emoluments.....	31

THE HIGHLIGHTS OF THE REPORT

1. The total number of State Government employees as on 31st March 2006 was 50210 as against 48258 on 31st March 2003 thereby registering an increase of 4.04% over the previous census.
2. Out of the total number of 50210 employees, female employees were 14364. Female employees registered an increase of 7.99% over the period of 3 (three) years. The census further reveals that the share of women employees to total employees was 28.61% status-wise, it was found that female employees in Gazetted status was 2.20%, in Non-Gazetted status 21.46% and in Grade IV it was 4.95%. Jaintia Hills District with 40.70% of the District total emerged as the highest number of female employees whereas South Garo Hills with 20.41% was the lowest.
3. As per the report, it was found that 36108 or 71.91% of the total number of employees were permanent and 14102 or 28.09% were temporary employees.
4. Out of 50210 employees, 44184 or 88% belonged to Scheduled Tribe category, 510 or 1.02% to Scheduled Caste, 1453 or 2.89% to Other Backward Classes and 4063 or 8.09% belonged to Others i.e. other than the above mentioned three categories.
5. The Census reveals that out of 44184 Scheduled tribe category, 61.90% were of the Khasi & Jaintia community, 33.97% were of the Garo Community and 4.13% belonged to other Scheduled Tribe category other than Khasi & Jaintia and Garo Community.
6. Of the total number of 50210 employees, 3220 or 6.41% were Gazetted, 36365 or 72.43% were Non-Gazetted and 10625 or 21.16% were Grade IV employees.
7. Out of the 3220 Gazetted employees, 26.30% were in Rural areas and out of 46990, Non-Gazetted and Grade IV employees working in rural areas were 43.82%. The overall number of employees working in Rural and Urban areas were recorded at 42.70% and 57.30% respectively.

8. Based on the projected population of the State as on 31.03.2006, the employee population ratio of the State worked out to 1:53 as against 1:51 as on 31.03.2003. Ri-Bhoi district had the lowest employee population ratio of 1:92 followed by East Garo Hills district at 1:70, while East Khasi Hills district had the highest employee population ratio of 1:5.
9. East Khasi Hills district recorded the highest number of Government employees with 20966 or 41.76% of the total number. West Garo Hills district with 8994 or 17.91% is ranked second. Next Jaintia Hills district with 6734 or 13.41%, then West Khasi Hills district with 5078 or 10.11%, East Garo Hills District with 4105 or 8.18%, Ri-Bhoi district with 2574 or 5.13% and lastly South Garo Hills district with 1759 or 3.50%.
10. The Census reveals that there are eleven major departments which constituted more than 80% of the total number of employees in the State. They are the Police Department (18.82%), Education Department (17.54%), Health Department (12.13%), Public Works Department (8.37%), Agriculture Department (4.23%), Public Health Engineering Department (3.89%), Secretariat Department (3.84%), Animal & Husbandry Department (3.23%), Forest Department (2.95%), Soil & Water Conservation Department (2.62%) and Community & Rural Development Department (2.58%). The other 42 departments contributed less than 20% to the total number of employees.
11. Police Department had the highest number of employees with 9450 of the total employees followed by Education Department with 8807, Small Savings Department registered the least number of employees with only 6 of the total.
12. The highest number of women employees with 7.67% of the total number of employees recorded was in the Education Department and was followed by the Health Department with 6.14%. The lowest number of women employees with 0.01% of the total number was recorded in Boiler Inspectorate Department.
13. The highest percentage of employees were of educational qualification below Matric with 40.26% of the total employees while 35.83% of employees had passed Matriculation, Pre-University or it equivalent. Degree holders in Arts,

Science or Commerce stream constituted 9.80%. Diploma holders in Civil Engineering, Agriculture, Sericulture, Veterinary, Pharmacy and Textile were 2.04%, 2.57% were employees with Degree in Civil Engineering, Agriculture, Medical and Veterinary and also 2.12% were employees with Post-Graduate in Arts, Science, Commerce, Engineering, Agriculture, Medical and Veterinary.

14. The Census revealed that the greatest portion of Government employees i.e. 23.48% drew pay in the scale of Rs. 3100 – 5060 and its extended scale of Rs. 3900 – 5325. 20.90% are those who drew the scale of pay of Rs. 2440 – 3680 whose extended scale is 2900 – 3875. The lowest percentage are those who drew the pay scale of Rs. 13200 – 17000 with a mere 0.01%.
15. Out of 50210 employees, 46515 were those employees whose dates of birth have been reported. Out of these reported figures, the employees in the age group of 38 – 42 formed the highest percentage of 20.30% while the lowest percentage of 1.42% was in the age group of 18 – 22.
16. Of the total employees of 50210, 30254 or 60.25% were technical employees and 19956 or 39.75% were clerical employees.
17. As per 31st March 2006, the estimated monthly expenditure worked out for State Government Employees was Rs. 44.95 crores.

THE MAIN FEATURES OF THE REPORT

1. TREND IN MEGHALAYA GOVERNMENT EMPLOYEES.

The census reveals that the total number of employees under Meghalaya Government as on 31st March 2006 was 50210 as against 48258 on 31st March 2003. The index of employment shows an increase of 44 from 1098 in 2003.

The trend and indices of Meghalaya Government employees from 1970 onwards are shown in the table below:-

**The trend and indices of employment of
Meghalaya Government Employees from 1970 onwards**

As on 31 st March	Number of Employees	Growth over previous census		Index of Employment Base 1970 = 100
		Number	Percentage	
<i>1</i>	<i>2</i>	<i>3</i>	<i>4</i>	<i>5</i>
1970	4395	-	-	100
1972	9585	5190	118.09	218
1973	13306	3721	38.82	303
1975	16556	3250	24.42	377
1977	18973	2417	14.60	432
1979	20005	1032	5.44	455
1981	21026	1021	5.10	478
1984	23351	2325	11.06	531
1987	29380	6029	25.82	668
1991	33517	4137	14.08	763
1997	39023	5506	16.43	888
2000	46529	7506	19.23	1059
2003	48258	1729	3.72	1098
2006	50210	1952	4.04	1142

2. TREND IN MEGHALAYA GOVERNMENT EMPLOYEES BY SEX

The growth rate in the number of female employment as seen from the table presented below continue to show an increasing trend and higher rate when compared with their male counterpart. In a period of three and a half decades, female employees increased by 3320% where as male employees increased by 802% only. Further, in a span of three years i.e. from the previous census as on 31st March 2003, female employees increased by 7.99% and male employees by 2.54%.

The number of female employees per thousand male employees registered an increase of 295 over the last 36 years.

Trend in Meghalaya Government Employees by Sex

As on 31 st March	Male		Female		Total	Number of Females per 1000 Male Employees
	Nos	Percentage	Nos	Percentage		
<i>1</i>	<i>2</i>	<i>3</i>	<i>4</i>	<i>5</i>	<i>6</i>	<i>7</i>
1970	3975	90.44	420	9.56	4395	106
1972	8604	89.77	981	10.23	9585	114
1973	11913	89.53	1393	10.47	13306	117
1975	14577	88.05	1979	11.95	16556	136
1977	16404	86.46	2569	13.54	18973	157
1979	16949	84.72	3056	15.28	20005	180
1981	17363	82.58	3663	17.42	21026	211
1984	19060	81.62	4291	18.38	23351	225
1987	23680	80.60	5700	19.40	29380	241
1991	26817	80.01	6700	19.99	33517	250
1997	30404	77.91	8619	22.09	39023	283
2000	34352	73.83	12177	26.17	46529	354
2003	34957	72.44	13301	27.56	48258	380
2006	35846	71.39	14364	28.61	50210	401

**3.THE NUMBER OF PERMANENT AND TEMPORARY EMPLOYEES BY
STATUS AS ON 31ST MARCH,2006**

As per the table given below, the total number of Permanent employees were 36108 (71.91%) and Temporary employees were 14102 (28.09%). Out of 3220 Gazetted employees, 2647 (82.20%) were Permanent and 573 (17.80%) were Temporary employees. In the Non-Gazetted category excluding Grade IV, out of 36365 employees, Permanent employees were 27105 (74.54%) and Temporary employees were 9260 (25.46%). Out of 10625 Grade IV employees, Permanent and Temporary employees were 6356 (59.82%) and 4269 (40.18%) respectively.

The Classification of the Employees according to Status and Tenure of Service

Status		Permanent	Temporary	Total	Percentage to Total
<i>1</i>		<i>2</i>	<i>3</i>	<i>4</i>	<i>5</i>
Gazetted	Group A	2171	455	2626	5.23
	Group B	476	118	594	1.18
Non-Gazetted	Group B	1857	492	2349	4.68
	Group C	25248	8768	34016	67.75
	Group D	6356	4269	10625	21.16
Total		36108 (71.91)	14102 (28.09)	50210	100.00

Figures in brackets are percentage to total.

4. GROUP WISE DISTRIBUTION OF GOVERNMENT EMPLOYEES

The census reveals that the highest percentage increase was in the Gazetted Group B with 17.62% and the lowest was 1.83% in Group D. 7.69% of female employees were in the Gazetted category and 92.31% were in Non-Gazetted category including Grade IV. Further the total number of Gazetted employees were 3220 and Non-Gazetted employees including Grade IV were 46990.

The details are depicted in the following table:-

**Group-wise distribution of Government Employees
as on 31st March 2000,2003 and 2006**

Groups	As on 31.03.2000			As on 31.03.2003			As on 31.03.2006			% age increase or decrease during 2000-2003	%age increase or decrease during 2003-2006
	Male	Female	Total	Male	Female	Total	Male	Female	Total		
<i>1</i>	<i>2</i>	<i>3</i>	<i>4</i>	<i>5</i>	<i>6</i>	<i>7</i>	<i>8</i>	<i>9</i>	<i>10</i>	<i>11</i>	<i>12</i>
<u>Gazetted</u>											
Group - A	1449	679	2128	1590	849	2439	1674	952	2626	14.61	7.67
Group - B	474	121	595	407	98	505	442	152	594	-15.13	17.62
<u>Non-Gazetted</u>											
Group – B	1424	574	1998	1505	725	2230	1473	876	2349	11.61	5.34
Group – C	22782	9205	31987	23033	9617	32650	24119	9897	34016	2.07	4.18
Group - D	8223	1598	9821	8422	2012	10434	8138	2487	10625	6.24	1.83
Total	34352	12177	46529	34957	13301	48258	35846	14364	50210	3.72	4.04

**5. PERCENTAGE INCREASE OR DECREASE OF EMPLOYEES BY
CASTE/ TRIBE**

The bulk of State Government employees belonged to Scheduled Tribe category. The census reveals that 44184 or 88% of the total employees were Scheduled Tribe, registering an increase of 6.04% over the previous census. Other Backward Classes registered an increase of 13.07% whereas Scheduled Castes and Others were declined by 15.56% and 13.59% respectively.

Percentage Increase or Decrease of Employees by Caste/Tribe

Particulars	Number of employees				Percentage increase/decrease		
	1997	2000	2003	2006	2000 over 1997	2003 over 2000	2006 over 2003
<i>1</i>	<i>2</i>	<i>3</i>	<i>4</i>	<i>5</i>	<i>6</i>	<i>7</i>	<i>8</i>
Schedule Tribe	31663	39528	41667	44184	(+) 24.84	(+) 5.41	(+) 6.04
Schedule Caste	594	708	604	510	(+) 19.19	(-) 14.69	(-) 15.56
Other Backward Classes	1855	1474	1285	1453	(-) 20.54	(-) 12.82	(+) 13.07
Other	4911	4819	4702	4063	(-) 1.87	(-) 2.43	(-) 13.59

**6.DISTRIBUTION OF SCHEDULED TRIBE EMPLOYEES ACCORDING TO
STATUS BY MAIN TRIBES.**

The Khasi & Jaintia community comprises 27351 (61.90%) out of the 44184 Scheduled Tribe employees. The Garo community were 15008 (33.97%) and 1825 (4.13%) belonged to other communities recognized as Scheduled Tribes by the State Government .

Distribution of Scheduled Tribe Employees according to status by Main Tribes

Status		Khasi & Jaintia	Garos	Other tribes	Total
<i>1</i>		<i>2</i>	<i>3</i>	<i>4</i>	<i>5</i>
Gazetted	Group – A	1785	568	41	2394
	Group – B	424	106	6	536
Non-Gazetted	Group – B	1511	460	52	2023
	Group – C	17765	11029	1383	30177
	Group – D	5866	2845	343	9054
Grand Total		27351	15008	1825	44184

7. DISTRICT WISE NUMBER OF MEGHALAYA GOVERNMENT

EMPLOYEES AS ON 31ST MARCH 2000,2003 AND 2006.

It has been observed from the table given below that East Khasi Hills district has the highest number of Government employees with 20966 numbers. This is because Shillong, the capital of the State is situated in East Khasi Hills and almost all the Heads of Departments are located in and around Shillong. The lowest number of Government employees with 1759 were in the South Garo Hills district.

West Khasi Hills District recorded the highest increase in the number of employees with 25.23% over the previous census as compared to the other districts.

Number of Meghalaya Government Employees as on 31st March 2000, 2003 and 2006

District	As on 31.03.2000				As on 31.03.2003				As on 31.03.2006				Percentage increase (+) or decrease (-) of 2003 over 2000	Percentage increase (+) or decrease (-) of 2006 over 2003
	Gazetted	Non-Gazetted	Grade IV	Total	Gazetted	Non-Gazetted	Grade IV	Total	Gazetted	Non-Gazetted	Grade IV	Total		
<i>1</i>	<i>2</i>	<i>3</i>	<i>4</i>	<i>5</i>	<i>6</i>	<i>7</i>	<i>8</i>	<i>9</i>	<i>10</i>	<i>11</i>	<i>12</i>	<i>13</i>	<i>14</i>	<i>15</i>
West Garo Hills	422	6741	1816	8979	474	6901	1813	9188	478	6838	1678	8994	(+) 2.33	(-) 2.11
East Garo Hills	158	2944	850	3952	185	2934	909	4028	176	3056	873	4105	(+) 1.92	(+) 1.91
South Garo Hills	85	1441	371	1897	79	1490	341	1910	96	1346	317	1759	(+) 0.69	(-) 7.91
West Khasi Hills	192	2998	874	4064	224	2889	942	4055	235	3870	973	5078	(-) 0.22	(+) 25.23
Ri-Bhoi	184	1387	550	2121	187	1426	613	2226	212	1725	637	2574	(+) 4.95	(+) 15.63
East Khasi Hills	1371	14331	4270	19972	1412	14994	4543	20949	1614	14619	4733	20966	(+) 4.89	(+) 0.08
Jaintia Hills	311	4143	1090	5544	383	4246	1273	5902	409	4911	1414	6734	(+) 6.46	(+) 14.10
All Meghalaya	2723	33985	9821	46529	2944	34880	10434	48258	3220	36365	10625	50210	(+) 3.72	(+) 4.04

8. DEPARTMENT –WISE NUMBER OF PERMANENT AND TEMPORARY EMPLOYEES BY STATUS.

As appeared from the table detailed below, out of 53 departments, Health Department had the highest number of Gazetted Permanent employees with 495 showing an increase of 32.71% over the last Census. The Non-Gazetted Permanent employees were highest in the Education Department with 5508. Grade IV Permanent employees were highest in the Health Department with 1634.

As far as Temporary employees are concerned, Animal Husbandry Department with 94 employees was highest in the Gazetted category. Education Department with 2092 was the highest in terms of Non-Gazetted employees and the Public Works Department with 658 was highest in terms of Grade IV category.

Details are given in the table on the next page:-

Department-wise number of Permanent and Temporary Employees by Status

Sl. No	Departments	Permanent			Temporary			All Employees		
		Gazetted	Non-Gazetted	Grade IV	Gazetted	Non-Gazetted	Grade IV	Gazetted	Non-Gazetted	Grade IV
1	2	3	4	5	6	7	8	9	10	11
1.	Accounts	19	206	83	5	80	25	24	286	108
2.	Agriculture	306	845	398	41	292	243	347	1137	641
3.	Animal husbandry & Veterinary	110	205	189	94	552	470	204	757	659
4.	Arts & Culture	5	36	20	3	50	39	8	86	59
5.	Assembly Secretariat	32	133	147	-	37	64	32	170	211
6.	Boiler Inspectorate	2	5	2	-	-	-	2	5	2
7.	Border Areas Development	7	27	30	5	14	5	12	41	35
8.	Civil Defence & Home Guards	13	884	107	1	47	20	14	931	127
9.	Civil Task Force	-	2	4	-	4	-	-	6	4
10.	Community & Rural Development	59	725	89	20	357	45	79	1082	134
11.	Co-operation	65	86	49	-	53	20	65	139	69
12.	Economics & Statistics	20	115	28	-	58	9	20	173	37
13.	Education including NCC	291	5508	645	40	2092	231	331	7600	876
14.	Election	-	100	33	1	32	18	1	132	51
15.	Electrical Inspectorate	2	17	13	-	3	1	2	20	14
16.	Employment	19	105	41	3	43	27	22	148	68
17.	Excise	11	144	11	2	128	11	13	272	22
18.	Fisheries	18	145	101	2	28	56	20	173	157
19.	Finance	9	1	-	15	2	-	24	3	-
20.	Forest	88	365	102	6	642	279	94	1007	381
21.	Food & Civil Supplies	24	149	40	3	33	11	27	182	51
22.	GAD, DC's office, Meghalaya Houses	6	456	366	3	71	106	9	527	492
23.	Geology & Mining	8	47	26	28	92	72	36	139	98
24.	Governor's Secretariat	3	15	51	-	8	8	3	23	59
25.	Health	495	2778	1634	38	718	425	533	3496	2059
26.	Housing	12	50	22	3	29	10	15	79	32
27.	Industries	61	208	127	10	13	12	71	221	139
28.	Information & Public Relations	11	77	29	4	45	18	15	122	47
29.	Jail	10	158	27	-	21	8	10	179	35
30.	Judicial including High Court	3	24	16	5	22	18	8	46	34
31.	Labour	12	40	22	4	16	16	16	56	38
32.	Land Records & Surveys	4	82	21	-	34	173	4	116	194
33.	Lottery	-	-	-	-	13	9	-	13	9
34.	Meghalaya Admn. Training Institute	-	9	8	-	-	-	-	9	8
35.	Planning	22	47	23	5	11	8	27	58	31
36.	Police	76	8817	333	11	206	7	87	9023	340
37.	Printing & Stationery	7	347	49	-	8	8	7	355	57
38.	Programme Implementation	1	4	-	7	10	3	8	14	3
39.	Public Health Engineering	99	480	235	26	728	387	125	1208	622
40.	Public Service Commission	4	37	12	-	3	-	4	40	12
41.	Public Works Department	219	1372	396	91	1466	658	310	2838	1054
42.	Registration	-	-	-	-	2	1	-	2	1
43.	Secretariat & Meghalaya State Law Commission	291	565	184	18	544	326	309	1109	510
44.	Sericulture & Weaving	20	513	226	-	44	49	20	557	275
45.	Small Savings	-	3	-	-	2	1	-	5	1
46.	Social Welfare	19	108	36	28	288	75	47	396	111
47.	Soil Conservation	68	782	239	-	118	110	68	900	349
48.	Sports & Youth Affairs	6	28	15	2	27	11	8	55	26
49.	Taxation	38	32	20	41	89	119	79	121	139
50.	Tourism	6	21	18	-	5	4	6	26	22
51.	Transport	10	101	25	2	53	31	12	154	56
52.	Urban Affairs	29	64	33	5	12	8	34	76	41
53.	Weights & Measures	7	37	11	1	15	14	8	52	25
Grand Total		2647	27105	6356	573	9260	4269	3220	36365	10625

**9. NUMBER OF EMPLOYEES ACCORDING TO SEX AND DISTRICT
OF POSTING.**

Jaintia Hills district with 40.70% ranked first in respect of female employees as percentage to district total followed by East Khasi Hills district with 30.78% while South Garo Hills with 20.41% is the lowest rank.

Number of Employees according to Sex and District of Posting

District	Male	Female	Total	Female employees as percentage of District Total
<i>1</i>	<i>2</i>	<i>3</i>	<i>4</i>	<i>5</i>
West Garo Hills	7071	1923	8994	21.38
East Garo Hills	3148	957	4105	23.31
South Garo Hills	1400	359	1759	20.41
West Khasi Hills	3821	1257	5078	24.75
Ri-Bhoi	1900	674	2574	26.18
East Khasi Hills	14513	6453	20966	30.78
Jaintia Hills	3993	2741	6734	40.70
Meghalaya	35846	14364	50210	28.61

**10. PERCENTAGE DISTRIBUTION OF EMPLOYEES ACCORDING TO
STATUS AND URBAN – RURAL BREAK-UP.**

As per the table detailed below, the Gazetted employees working in urban areas were 2373 (73.70%) of the total 3220. the Non-Gazetted employees excluding Grade IV were 19912 (54.76%) of 36365 working in Urban areas. Out of 10625 Grade IV employees, 6487 (61.05%) were working in Urban areas.

The overall percentage of employees who were posted in Urban and Rural areas were 57.30% and 42.70% respectively.

Percentage Distribution of Employees according to status and Urban-Rural break-up.

Status	Rural		Urban		Total	
	Number	Percentage	Number	Percentage	Number	Percentage
<i>1</i>	<i>2</i>	<i>3</i>	<i>4</i>	<i>5</i>	<i>6</i>	<i>7</i>
Gazetted	847	26.30	2373	73.70	3220	100
Non-Gazetted	16453	45.24	19912	54.76	36365	100
Grade IV	4138	38.95	6487	61.05	10625	100
Total	21438	42.70	28772	57.30	50210	100

LIST OF TABLES

Sl. No	List of Tables	Pg. No.
1.	Census of Meghalaya Government Employees at a glance.....	13
2.	Population per State Government Employee by District.....	14
3.	Growth of Male and Female Employees.....	14
4.	Number of State Government Employees according to status and sex as on 31 st March 2006.....	15
5.	Number of Employees by Status and District of Posting.....	15
6.	Department-wise Percentage Distribution of Employees by sex.....	16
7.	Department-wise distribution of Employees by Status and sex.....	17
8.	Classification of Permanent and Temporary Employees by Sex.....	18
9.	District-wise Number of Employees according to Status and Tenure of Service.....	18
10.	Number of Female Employees by Status during 2000, 2003 and 2006.....	19
11.	Trend in Employment of Women by Meghalaya Government.....	19
12.	District-wise break-up of Employees according to Sex and Group.....	20
13.	Group-wise Distribution of Government Employees according to Rural - Urban.....	20
14.	District-wise break-up of Employees according to Rural - Urban.....	21
15.	Number of Employees according to Caste/Tribe.....	21
16.	Distribution of Employees according to Caste/Tribe by Departments.....	22
17.	Number of Employees by Caste/Tribe according to Status and Tenure of Service.....	23
18.	District-wise Distribution of Employees according to Caste/Tribe.....	23
19.	Distribution of Scheduled Tribes in Meghalaya Government Service by Departments.....	24
20.	District-wise Distribution of Scheduled Tribe Employees.....	25
21.	Number of Employees according to Status and Educational Qualification.....	25
22.	Number of Employees according to the Scales of Pay as on 31 st March 2006.....	26
23.	Distribution of Employees according to various Pay-Ranges.....	27
24.	Distribution of Employees according to Status and Age-Group.....	28
25.	Group-wise Basic Pay Range Distribution of State Government Employees by Districts..	29
26.	Statement of the department-wise distribution of the number of posts.....	30
27.	Group-wise classification of Technical and Clerical employees by Sex.....	31
28.	Group-wise distribution of employees according to monthly emoluments.....	31

Table No. 1
Census of Meghalaya Government Employees at a Glance

Particulars	As on 31 st March										
	1975	1977	1979	1981	1984	1987	1991	1997	2000	2003	2006
<i>1</i>	2	3	4	5	6	7	8	9	10	11	12
Total Employees	16556	18973	20005	21026	23351	29380	33517	39023	46529	48258	50210
(i) Gazetted	789	1045	1178	1293	1587	1900	2017	2493	2723	2944	3220
(ii) Non-Gazetted	10644	12775	13210	13686	15021	19314	22356	26840	33985	34880	36365
(iii) Grade IV	5123	5153	5617	6047	6743	8166	9144	9690	9821	10434	10625
Permanent Employees	4673	3274	4968	5407	9174	12617	18050	23610	30106	33265	36108
(i) Gazetted	358	418	482	556	974	1171	1368	1806	2028	2213	2647
(ii) Non-Gazetted	3309	2415	3959	4275	6332	8862	13181	17281	22683	25271	27105
(iii) Grade IV	1006	441	527	576	1868	2584	3501	4523	5395	5781	6356
Temporary Employees	11883	15699	15037	15669	14177	16763	15467	15413	16423	14993	14102
(i) Gazetted	431	627	696	787	613	729	649	687	695	731	573
(ii) Non-Gazetted	7335	10360	9251	9411	8689	10452	9175	9559	11302	9609	9260
(iii) Grade IV	4117	4712	5090	5471	4875	5582	5643	5167	4426	4653	4269
Schedule Tribe Employees	9667	11924	13645	14737	17614	22085	26525	31663	39528	41667	44184
(i) Gazetted	427	600	735	857	1117	1342	1563	2015	2301	2595	2930
(ii) Non-Gazetted	6497	8301	9398	9970	11590	14974	17869	22015	29153	30365	32200
(iii) Grade IV	2743	3023	3512	3910	4907	5769	7093	7633	8074	8707	9054
Women Employees	1979	2569	3056	3613	4291	5700	6700	8619	12177	13301	14364
(i) Gazetted	76	107	125	191	276	366	467	672	800	947	1104
(ii) Non-Gazetted	1666	2144	2577	2990	3353	4466	5098	6527	9779	10342	10773
(iii) Grade IV	237	318	354	432	662	868	1135	1420	1598	2012	2487

Table No. 2
Population per State Government Employee by District

Districts	Estimated Population 2006	No of Government Employees as on 31.03.2006	Population per Government Employee
<i>1</i>	<i>2</i>	<i>3</i>	<i>4</i>
West Garo Hills	587920	8994	65
East Garo Hills	288662	4105	70
South Garo Hills	115585	1759	66
West Khasi Hills	343305	5078	68
Ri-bhoi	237241	2574	92
East Khasi Hills	732610	20966	35
Jaintia Hills	348388	6734	52
Total	2653711	50210	53

Table No. 3
Growth of Male and Female Employees

As on 31st March	Male Employees	Growth over previous census		Female Employees	Growth over previous census	
		Number	Percentage		Number	Percentage
<i>1</i>	<i>2</i>	<i>3</i>	<i>4</i>	<i>5</i>	<i>6</i>	<i>7</i>
1970	3975	-	-	420	-	-
1972	8604	4629	116.45	981	561	133.57
1973	11913	3309	38.46	1393	412	42.00
1975	14577	2664	22.36	1979	586	42.07
1977	16404	1827	12.53	2569	590	29.81
1979	16949	545	3.32	3056	487	18.96
1981	17363	414	2.44	3663	607	19.86
1984	19060	1697	9.77	4291	628	17.14
1987	23680	4620	24.24	5700	1409	32.84
1991	26817	3137	13.25	6700	1000	17.54
1997	30404	3587	13.38	8619	1919	28.64
2000	34352	3948	12.99	12177	3558	41.28
2003	34957	605	1.76	13301	1124	9.23
2006	35846	889	2.54	14364	1063	7.99

Table No. 4
Number of State Government Employees according to Status and Sex
as on 31st March 2006

Status	Male	Female	Total
<i>1</i>	<i>2</i>	<i>3</i>	<i>4</i>
Gazetted	2116 (4.21)	1104 (2.20)	3220 (6.41)
Non-Gazetted	25592 (50.97)	10773 (21.46)	36365 (72.43)
Grade IV	8138 (16.21)	2487 (4.95)	10625 (21.16)
Total	35846 (71.39)	14364 (28.61)	50210 (100.00)

Figures in brackets are percentages to all employees.

Table No. 5
Number of Employees by Status and District of Posting

Districts	Gazetted		Non-Gazetted			Total	Percentage to Total
	Group A	Group B	Group B	Group C	Group D		
<i>1</i>	<i>2</i>	<i>3</i>	<i>4</i>	<i>5</i>	<i>6</i>	<i>7</i>	<i>8</i>
West Garo Hills	410	68	406	6432	1678	8994	17.91
East Garo Hills	149	27	160	2896	873	4105	8.18
South Garo Hills	77	19	56	1290	317	1759	3.50
West Khasi Hills	190	45	208	3662	973	5078	10.11
Ri-Bhoi	163	49	94	1631	637	2574	5.13
East Khasi Hills	1271	343	1103	13516	4733	20966	41.76
Jaintia Hills	366	43	322	4589	1414	6734	13.41
All Meghalaya	2626	594	2349	34016	10625	50210	100.00

Table No. 6
Department-wise Percentage Distribution of Employees by Sex

Sl. No.	Departments	Male		Female		Total No. of Employees
		Number	Percentage	Number	Percentage	
1	2	3	4	5	6	7
1.	Accounts	262	63	156	37	418
2.	Agriculture	1622	78	452	22	2074
3.	Animal husbandry & Veterinary	1180	73	440	27	1620
4.	Arts & Culture	83	54	70	46	153
5.	Assembly Secretariat	224	54	189	46	413
6.	Broiler Inspectorate	7	78	2	22	9
7.	Border Areas Development	67	76	21	24	88
8.	Civil Defence & Home Guards	1011	94	61	6	1072
9.	Civil Task Force	8	80	2	20	10
10.	Community & Rural Development	1003	77	292	23	1295
11.	Co-operation	160	59	113	41	273
12.	Economics & Statistics	164	71	66	29	230
13.	Education including NCC	4957	56	3850	44	8807
14.	Election	134	73	50	27	184
15.	Electrical Inspectorate	24	67	12	33	36
16.	Employment	158	66	80	34	238
17.	Excise	250	81	57	19	307
18.	Fisheries	282	81	68	19	350
19.	Finance	14	52	13	48	27
20.	Forest	1263	85	219	15	1482
21.	Food & Civil Supplies	170	65	90	35	260
22.	GAD, DC's office, Meghalaya Houses	674	66	354	34	1028
23.	Geology & Mining	225	82	48	18	273
24.	Governor's Secretariat	70	82	15	18	85
25.	Health	3004	49	3084	51	6088
26.	Housing	87	69	39	31	126
27.	Industries	306	71	125	29	431
28.	Information & Public Relations	149	81	35	19	184
29.	Jail	189	84	35	16	224
30.	Judicial including High Court	57	65	31	35	88
31.	Labour	62	56	48	44	110
32.	Land Records & Surveys	248	79	66	21	314
33.	Lottery	13	59	9	41	22
34.	Meghalaya Admn. Training Institute	11	65	6	35	17
35.	Planning	79	68	37	32	116
36.	Police	9141	97	309	3	9450
37.	Printing & Stationery	284	68	135	32	419
38.	Programme Implementation	17	68	8	32	25
39.	Public Health Engineering	1528	78	427	22	1955
40.	Public Service Commission	29	52	27	48	56
41.	Public Works Department	3001	71	1201	29	4202
42.	Registration	38	70	16	30	54
43.	Secretariat & Meghalaya State Law Commission	986	51	942	49	1928
44.	Sericulture & Weaving	574	67	278	33	852
45.	Small Savings	2	33	4	67	6
46.	Social Welfare	233	42	321	58	554
47.	Soil Conservation	1110	84	207	16	1317
48.	Sports & Youth Affairs	67	75	22	25	89
49.	Taxation	248	73	91	27	339
50.	Tourism	34	63	20	37	54
51.	Transport	170	77	52	23	222
52.	Urban Affairs	102	68	49	32	151
53.	Weights & Measures	65	76	20	24	85
	Grand Total	35846	71	14364	29	50210

Table No. 7
Department-wise distribution of employees by Status and Sex

Sl. No	Departments	Gazetted			Non-Gazetted			Grade IV		
		Male	Female	Total	Male	Female	Total	Male	Female	Total
1	Accounts	21	3	24	159	127	286	82	26	108
2	Agriculture	206	141	347	896	241	1137	557	84	641
3	Animal husbandry & Veterinary	127	77	204	553	204	757	500	159	659
4	Arts & Culture	3	5	8	41	45	86	39	20	59
5	Assembly Secretariat	14	18	32	97	73	170	113	98	211
6	Boiler Inspectorate	2	-	2	3	2	5	2	-	2
7	Border Areas Development	12	-	12	27	14	41	28	7	35
8	Civil Defence & Home Guards	14	-	14	895	36	931	102	25	127
9	Civil Task Force	-	-	-	4	2	6	4	-	4
10	Community & Rural Development	63	16	79	832	250	1082	108	26	134
11	Co-operation	41	24	65	67	72	139	52	17	69
12	Economics & Statistics	15	5	20	123	50	173	26	11	37
13	Education including NCC	143	188	331	4185	3415	7600	629	247	876
14	Election	1	-	1	87	45	132	46	5	51
15	Electrical Inspectorate	2	-	2	11	9	20	11	3	14
16	Employment	12	10	22	92	56	148	54	14	68
17	Excise	13	-	13	221	51	272	16	6	22
18	Fisheries	14	6	20	122	51	173	146	11	157
19	Finance	11	13	24	3	-	3	-	-	-
20	Forest	88	6	94	857	150	1007	318	63	381
21	Food & Civil Supplies	27	-	27	111	71	182	32	19	51
22	GAD, DC's office, Meghalaya Houses	8	1	9	292	235	527	374	118	492
23	Geology & Mining	34	2	36	106	33	139	85	13	98
24	Governor's Secretariat	3	-	3	19	4	23	48	11	59
25	Health	259	274	533	1345	2151	3496	1400	659	2059
26	Housing	13	2	15	46	33	79	28	4	32
27	Industries	62	9	71	128	93	221	116	23	139
28	Information & Public Relations	13	2	15	96	26	122	40	7	47
29	Jail	10	-	10	151	28	179	28	7	35
30	Judicial including High Court	6	2	8	26	20	46	25	9	34
31	Labour	11	5	16	22	34	56	29	9	38
32	Land Records & Surveys	4	-	4	86	30	116	158	36	194
33	Lottery	-	-	-	6	7	13	7	2	9
34	Meghalaya Admn. Training Institute	-	-	-	7	2	9	4	4	8
35	Planning	15	12	27	40	18	58	24	7	31
36	Police	81	6	87	8746	277	9023	314	26	340
37	Printing & Stationery	6	1	7	246	109	355	32	25	57
38	Programme Implementation	6	2	8	9	5	14	2	1	3
39	Public Health Engineering	112	13	125	871	337	1208	545	77	622
40	Public Service Commission	2	2	4	19	21	40	8	4	12
41	Public Works Department	278	32	310	1902	936	2838	821	233	1054
42	Registration	-	-	-	-	2	2	1	-	1
43	Secretariat & Meghalaya State Law Commission	160	149	309	490	619	1109	336	174	510
44	Sericulture & Weaving	12	8	20	325	232	557	237	38	275
45	Small Savings	-	-	-	2	3	5	-	1	1
46	Social Welfare	8	39	47	133	263	396	92	19	111
47	Soil Conservation	55	13	68	773	127	900	282	67	349
48	Sports & Youth Affairs	8	-	8	38	17	55	21	5	26
49	Taxation	72	7	79	65	56	121	111	28	139
50	Tourism	3	3	6	14	12	26	17	5	22
51	Transport	12	-	12	113	41	154	45	11	56
52	Urban Affairs	27	7	34	50	26	76	25	16	41
53	Weights & Measures	7	1	8	40	12	52	18	7	25
	Grand Total	2116	1104	3220	25592	10773	36365	8138	2487	10625

Table No. 8
Classification of Permanent and Temporary Employees by Sex

Groups	Permanent		Temporary		Total	
	Male	Female	Male	Female	Male	Female
<i>1</i>	<i>2</i>	<i>3</i>	<i>4</i>	<i>5</i>	<i>6</i>	<i>7</i>
Group A	1383	788	291	164	1674	952
Group B	1436	897	479	131	1915	1028
Group C	18756	6492	5363	3405	24119	9897
Group D	4949	1407	3189	1080	8138	2487
Total	26524	9584	9322	4780	35846	14364

Table No. 9
District-wise Number of Employees according to Status and Tenure of Service

Districts	Permanent			Temporary			All Employees		
	Gazetted	Non-Gazetted	Grade IV	Gazetted	Non-Gazetted	Grade IV	Gazetted	Non-Gazetted	Grade IV
<i>1</i>	<i>2</i>	<i>3</i>	<i>4</i>	<i>5</i>	<i>6</i>	<i>7</i>	<i>8</i>	<i>9</i>	<i>10</i>
West Garo Hills	411	5300	1134	67	1538	544	478	6838	1678
East Garo Hills	147	2279	431	29	777	442	176	3056	873
South Garo Hills	72	1075	184	24	271	133	96	1346	317
West Khasi Hills	177	2640	547	58	1230	426	235	3870	973
Ri-Bhoi	163	1457	473	49	268	164	212	1725	637
East Khasi Hills	1348	11464	2843	266	3155	1890	1614	14619	4733
Jaintia Hills	329	2890	744	80	2021	670	409	4911	1414
All Meghalaya	2647	27105	6356	573	9260	4269	3220	36365	10625

Table No. 10
Number of Female Employees by Status during 2000, 2003 and 2006

Status	2000			2003			2006		
	All Employees	Female Employees	Percentage of Female employees to total employees	All Employees	Female Employees	Percentage of Female employees to total employees	All Employees	Female Employees	Percentage of Female employees to total employees
<i>1</i>	<i>2</i>	<i>3</i>	<i>4</i>	<i>5</i>	<i>6</i>	<i>7</i>	<i>8</i>	<i>9</i>	<i>10</i>
Gazetted	2723	800	29.38	2944	947	32.17	3220	1104	34.29
Non-Gazetted	33985	9779	28.77	34880	10342	29.65	36365	10773	29.62
Grade IV	9821	1598	16.27	10434	2012	19.28	10625	2487	23.41
Total	46529	12177	26.17	48258	13301	27.56	50210	14364	28.61

Table No. 11
Trend in Employment of Women by Meghalaya Government

Departments	As on 31 st March						
	1972	1975	1981	1991	2000	2003	2006
<i>1</i>	<i>2</i>	<i>3</i>	<i>4</i>	<i>5</i>	<i>6</i>	<i>7</i>	<i>8</i>
Community & Rural Development	61 (100)	98 (161)	106 (174)	149 (244)	225 (369)	278 (456)	292 (479)
Education	219 (100)	326 (149)	562 (257)	814 (372)	3904 (1783)	3787 (1729)	3850 (1758)
Health	264 (100)	549 (208)	920 (348)	1424 (539)	2379 (901)	2870 (1087)	3084 (1168)
Public Works	100 (100)	196 (196)	234 (234)	701 (701)	808 (808)	1028 (1028)	1201 (1201)
Secretariat	68 (100)	164 (241)	398 (585)	634 (932)	762 (1121)	695 (1022)	942 (1385)
Other Departments	269 (100)	646 (240)	1443 (536)	2978 (1107)	4099 (1524)	4643 (1726)	4995 (1557)
Total	981 (100)	1979 (202)	3663 (373)	6700 (683)	12177 (1241)	13301 (1356)	14364 (1464)

Figures in brackets indicate index numbers with base 1972 = 100

Table No 12
District-wise break-up of employees according to Sex and Group

Districts	Gazetted				Non-Gazetted						Total	
	Group A		Group B		Group B		Group C		Group D		Male	Female
	Male	Female	Male	Female	Male	Female	Male	Female	Male	Female		
<i>1</i>	<i>2</i>	<i>3</i>	<i>4</i>	<i>5</i>	<i>6</i>	<i>7</i>	<i>8</i>	<i>9</i>	<i>10</i>	<i>11</i>	<i>12</i>	<i>13</i>
West Garo Hills	240	170	61	7	260	146	5019	1413	1491	187	7071	1923
East Garo Hills	106	43	26	1	125	35	2113	783	778	95	3148	957
South Garo Hills	55	22	19	-	48	8	993	297	285	32	1400	359
West Khasi Hills	136	54	39	6	155	53	2719	943	772	201	3821	1257
Ri-Bhoi	114	49	44	5	65	29	1158	473	519	118	1900	674
East Khasi Hills	812	459	216	127	619	484	9477	4039	3389	1344	14513	6453
Jaintia Hills	211	155	37	6	201	121	2640	1949	904	510	3993	2741
All Meghalaya	1674	952	442	152	1473	876	24119	9897	8138	2487	35846	14364

Table No. 13
Group-wise Distribution of Government Employees
according to Rural - Urban.

Groups	Rural			Urban		
	Male	Female	Total	Male	Female	Total
<i>1</i>	<i>2</i>	<i>3</i>	<i>4</i>	<i>5</i>	<i>6</i>	<i>7</i>
Gazetted						
(i) Group A	432	277	709	1242	675	1917
(ii) Group B	124	14	138	318	138	456
Non-Gazetted						
(i) Group B	490	156	646	983	720	1703
(ii) Group C	11237	4570	15807	12882	5327	18209
(iii) Group D	3367	771	4138	4771	1716	6487
All Employees	15650	5788	21438	20196	8576	28772

Table No. 14
District-wise break-up of Employees according to Rural-Urban

Districts	Rural				Urban			
	Gazetted	Non-Gazetted	Grade IV	Total	Gazetted	Non-Gazetted	Grade IV	Total
<i>1</i>	<i>2</i>	<i>3</i>	<i>4</i>	<i>5</i>	<i>6</i>	<i>7</i>	<i>8</i>	<i>9</i>
West Garo Hills	134	3696	784	4614	344	3142	894	4380
East Garo Hills	65	1927	473	2465	111	1129	400	1640
South Garo Hills	19	838	126	983	77	508	191	776
West Khasi Hills	123	2009	473	2605	112	1861	500	2473
Ri-Bhoi	151	1279	486	1916	61	446	151	658
East Khasi Hills	224	3588	982	4794	1390	11031	3751	16172
Jaintia Hills	131	3116	814	4061	278	1795	600	2673
All Meghalaya	847	16453	4138	21438	2373	19912	6487	28772

Table No. 15
Number of Employees according to Caste/Tribe

Particulars	Gazetted		Non-Gazetted			All Employees
	Group A	Group B	Group B	Group C	Group D	
<i>1</i>	<i>2</i>	<i>3</i>	<i>4</i>	<i>5</i>	<i>6</i>	<i>7</i>
Scheduled Tribe	2394	536	2023	30177	9054	44184
Scheduled Caste	25	1	31	325	128	510
Other Backward Classes	29	9	61	936	418	1453
Others	178	48	234	2578	1025	4063
Total	2626	594	2349	34016	10625	50210

Table No. 16
Distribution of Employees according to Caste/Tribe by Departments

Sl. No	Departments	Schedule Tribe	Schedule Caste	Other Backward Classes	Others	Total
1	2	3	4	5	6	7
1.	Accounts	378	1	17	22	418
2.	Agriculture	1962	25	39	99	2125
3.	Animal husbandry & Veterinary	1474	23	40	83	1620
4.	Arts & Culture	142	-	2	9	153
5.	Assembly Secretariat	393	-	9	11	413
6.	Boiler Inspectorate	7	-	-	2	9
7.	Border Areas Development	83	-	2	3	88
8.	Civil Defence & Home Guards	825	8	27	212	1072
9.	Civil Task Force	6	-	2	2	10
10.	Community & Rural Development	1252	10	14	19	1295
11.	Co-operation	245	2	5	21	273
12.	Economics & Statistics	215	1	5	9	230
13.	Education including NCC	8153	139	242	273	8807
14.	Election	181	-	1	2	184
15.	Electrical Inspectorate	36	-	-	-	36
16.	Employment	227	-	2	9	238
17.	Excise	293	1	5	8	307
18.	Fisheries	340	1	4	5	350
19.	Finance	27	-	-	-	27
20.	Forest	1296	23	53	110	1482
21.	Food & Civil Supplies	247	3	3	7	260
22.	GAD, DC's office, Meghalaya Houses	852	10	35	131	1028
23.	Geology & Mining	248	1	3	21	273
24.	Governor's Secretariat	23	-	9	53	85
25.	Health	5528	62	113	385	6088
26.	Housing	114	1	2	9	126
27.	Industries	409	2	9	11	431
28.	Information & Public Relations	178	-	2	4	184
29.	Jail	166	10	27	21	224
30.	Judicial including High Court	68	-	3	17	88
31.	Labour	109	-	-	1	110
32.	Land Records & Surveys	283	-	7	24	314
33.	Lottery	21	-	-	1	22
34.	Meghalaya Admn. Training Institute	16	-	-	1	17
35.	Planning	106	2	5	3	116
36.	Police	7415	39	482	1514	9450
37.	Printing & Stationery	340	1	18	60	419
38.	Programme Implementation	24	-	-	1	25
39.	Public Health Engineering	1607	23	65	260	1955
40.	Public Service Commission	54	-	1	1	56
41.	Public Works Department	3530	112	149	411	4202
42.	Registration	3	-	-	-	3
43.	Secretariat & Meghalaya State law Commission	1828	-	18	82	1928
44.	Sericulture & Weaving	781	4	16	51	852
45.	Small Savings	5	-	1	-	6
46.	Social Welfare	548	-	2	4	554
47.	Soil Conservation	1250	4	5	58	1317
48.	Sports & Youth Affairs	85	1	1	2	89
49.	Taxation	331	-	2	6	339
50.	Tourism	47	-	2	5	54
51.	Transport	209	-	2	11	222
52.	Urban Affairs	140	1	2	8	151
53.	Weights & Measures	84	-	-	1	85
	Grand Total	44184	510	1453	4063	50210

Table No. 17
Number of Employees by Caste/Tribe according to Status and Tenure of Service

Status	Tenure of Service	Schedule Tribe	Schedule Caste	Other Backward Classes	Others	Total
<i>1</i>	<i>2</i>	<i>3</i>	<i>4</i>	<i>5</i>	<i>6</i>	<i>7</i>
Gazetted	Permanent	2386	23	34	204	2647
	Temporary	544	3	4	22	573
Non-Gazetted	Permanent	23662	240	727	2476	27105
	Temporary	8538	116	270	336	9260
Grade – IV	Permanent	5283	58	285	730	6356
	Temporary	3771	70	133	295	4269
All Employees	Permanent	31331	321	1046	3410	36108
	Temporary	12853	189	407	653	14102

Table No. 18
District-wise Distribution of Employees according to Caste/Tribe

Districts	Schedule Tribe	Schedule Caste	Other Backward Classes	Others	Total
<i>1</i>	<i>2</i>	<i>3</i>	<i>4</i>	<i>5</i>	<i>6</i>
West Garo Hills	7394	224	633	743	8994
East Garo Hills	3771	50	64	220	4105
South Garo Hills	1651	41	22	45	1759
West Khasi Hills	4746	55	34	243	5078
Ri-Bhoi	2302	36	43	193	2574
East Khasi Hills	17991	6	544	2425	20966
Jaintia Hills	6329	98	113	194	6734
All Meghalaya	44184	510	1453	4063	50210

Table No. 19
Distribution of Scheduled Tribes in Meghalaya Government Service by Departments

Sl. No	Departments	Khasi & Jaintia	Garo	Other Tribes	Total
1	2	3	4	5	6
1.	Accounts	279	85	14	378
2.	Agriculture	1338	569	55	1962
3.	Animal husbandry & Veterinary	996	419	59	1474
4.	Arts & Culture	105	36	1	142
5.	Assembly Secretariat	305	78	10	393
6.	Boiler Inspectorate	7	-	-	7
7.	Border Areas Development	51	32	-	83
8.	Civil Defence & Home Guards	365	370	90	825
9.	Civil Task Force	5	1	-	6
10.	Community & Rural Development	756	450	46	1252
11.	Co-operation	185	55	5	245
12.	Economics & Statistics	156	57	2	215
13.	Education including NCC	4118	3728	307	8153
14.	Election	116	60	5	181
15.	Electrical Inspectorate	23	13	-	36
16.	Employment	162	61	4	227
17.	Excise	186	98	9	293
18.	Fisheries	250	79	11	340
19.	Finance	26	1	-	27
20.	Forest	769	492	35	1296
21.	Food & Civil Supplies	174	68	5	247
22.	GAD, DC's office, Meghalaya Houses	572	250	30	852
23.	Geology & Mining	173	71	4	248
24.	Governor's Secretariat	22	-	1	23
25.	Health	4004	1396	128	5528
26.	Housing	77	35	2	114
27.	Industries	259	137	13	409
28.	Information & Public Relations	126	51	1	178
29.	Jail	110	49	7	166
30.	Judicial including High Court	58	10	-	68
31.	Labour	84	25	-	109
32.	Land Records & Surveys	196	84	3	283
33.	Lottery	19	2	-	21
34.	Meghalaya Admn. Training Institute	13	3	-	16
35.	Planning	86	17	3	106
36.	Police	3456	3397	562	7415
37.	Printing & Stationery	228	109	3	340
38.	Programme Implementation	22	2	-	24
39.	Public Health Engineering	1141	404	62	1607
40.	Public Service Commission	51	3	-	54
41.	Public Works Department	2624	731	175	3530
42.	Registration	3	-	-	3
43.	Secretariat & Meghalaya State Law Commission	1487	330	11	1828
44.	Sericulture & Weaving	397	262	122	781
45.	Small Savings	4	1	-	5
46.	Social Welfare	343	200	5	548
47.	Soil Conservation	729	497	24	1250
48.	Sports & Youth Affairs	59	25	1	85
49.	Taxation	266	62	3	331
50.	Tourism	38	8	1	47
51.	Transport	164	42	3	209
52.	Urban Affairs	107	32	1	140
53.	Weights & Measures	61	21	2	84
	Grand Total	27351	15008	1825	44184

Table No. 20
District-wise Distribution of Schedule Tribe Employees

Districts	Khasi & Jaintia	Garo	Other Tribes	Total
<i>1</i>	<i>2</i>	<i>3</i>	<i>4</i>	<i>5</i>
West Garo Hills	370	6235	789	7394
East Garo Hills	113	3417	241	3771
South Garo Hills	35	1539	77	1651
West Khasi Hills	4027	636	83	4746
Ri-Bhoi	2062	193	47	2302
East Khasi Hills	15062	2487	442	17991
Jaintia Hills	5682	501	146	6329
All Meghalaya	27351	15008	1825	44184

Table No. 21
Number of Employees according to Status and Educational Qualification

Educational Qualification	Gazetted		Non-Gazetted			Total
	Group A	Group B	Group B	Group C	Group D	
<i>1</i>	<i>2</i>	<i>3</i>	<i>4</i>	<i>5</i>	<i>6</i>	<i>7</i>
Below HSLC/Matric	-	3	47	11673	8501	20224
HSLC/Matric/SSLC	8	22	306	11218	799	12353
HSSLC/PU/Intermediate/XII	23	63	305	5066	208	5665
Degree in Arts/Sc/Commerce	359	269	797	3397	128	4950
Diploma in Civil Engineering	73	86	368	93	-	620
Diploma in Agri/Seri/Vety/Pharmacy/Textile etc.	20	14	77	291	-	402
Degree in Civil Engineering	394	18	14	5	-	431
Degree in Agriculture	305	2	1	-	-	308
Degree in Medical	368	1	-	-	-	369
Degree in Veterinary	183	-	1	-	-	184
PG in Arts/Sc/Commerce	435	39	301	186	2	963
PG in Engineering	11	-	6	-	-	17
PG in Agriculture	25	-	-	-	-	25
PG in Medical	51	-	-	-	-	51
PG in Veterinary	13	-	-	-	-	13
D.Phil/D.Litt/Ph.D	11	1	6	-	-	18
Other Qualification	116	22	47	311	32	528
Qualification not stated	231	54	73	1776	955	3089
Total	2626	594	2349	34016	10625	50210

Table No. 22
Number of Employees according to the scales of pay as on 31st March 2006.

Scales of Pay (Rs)	Group A		Group B		Group C		Group D		Total	
	M	F	M	F	M	F	M	F	M	F
<i>1</i>	<i>2</i>	<i>3</i>	<i>4</i>	<i>5</i>	<i>6</i>	<i>7</i>	<i>8</i>	<i>9</i>	<i>10</i>	<i>11</i>
2440-40-2680-EB-50-3080-60-3680 (2900-65-3875)	-	-	-	-	-	-	8076	2418	8076	2418
2650-50-2950-EB-60-3430-70-4130 (3250-75-4375)	-	-	-	-	1568	243	-	-	1568	243
2900-60-3260-EB-70-3820-80-4620 (3600-85-4875)	-	-	-	-	6559	132	-	-	6559	132
3100-70-3520-EB-80-4160-90-5060 (3900-95-5325)	-	-	-	-	8371	3420	-	-	8371	3420
3450-80-3930-EB-90-4650-100-5650 (4300-105-5875)	-	-	-	-	4040	2961	-	-	4040	2961
3725-90-4265-EB-100-5065-110-6165 (4650-115-6375)	-	-	-	-	950	653	-	-	950	653
3975-100-4575-EB-110-5455-120-6655 (4950-125-6825)	-	-	-	-	832	844	-	-	832	844
4250-110-4910-EB-120-5870-130-7170 (5400-135-7425)	-	-	-	-	442	713	-	-	442	713
4500-125-5220-EB-130-6260-140-7660 (5750-145-7925)	-	-	-	-	337	400	-	-	337	400
4900-130-5680-EB-140-6800-150-8300 (6150-155-8475)	-	-	-	-	131	244	-	-	131	244
5100-140-5940-EB-150-7140-160-8740 (6500-165-8975)	-	-	-	-	855	258	-	-	855	258
5300-150-6200-EB-160-7480-170-9180 (6775-175-9400)	-	-	1358	686	-	-	-	-	1358	686
5500-160-6460-EB-175-7860-190-9760	-	-	304	108	-	-	-	-	304	108
5750-175-6800-EB-190-8320-200-10120	-	-	72	116	-	-	-	-	72	116
5900-190-7040-EB-200-8640-225-10440	-	-	75	76	-	-	-	-	75	76
6100-200-7300-EB-225-8875-240-10795	-	-	103	40	-	-	-	-	103	40
6350-225-7700-EB-240-9380-250-11130	873	591	-	-	-	-	-	-	873	591
6850-240-8290-EB-250-10040-260-11600	124	106	-	-	-	-	-	-	124	106
7750-250-9000-EB-275-10375-290-12115	188	80	-	-	-	-	-	-	188	80
8750-275-10400-EB-300-13100	240	90	-	-	-	-	-	-	240	90
10000-300-11800-EB-325-14075	92	39	-	-	-	-	-	-	92	39
10750-325-12700-350-14800	17	3	-	-	-	-	-	-	17	3
11750-375-13625-400-15625	42	8	-	-	-	-	-	-	42	8
13200-475-17000	1	2	-	-	-	-	-	-	1	2
Consolidated pay/other pay scales not identical with the pay scales of the Government of Meghalaya, Fixed Pay	97	33	3	2	34	29	62	69	196	133
Total	1674	952	1915	1028	24119	9897	8138	2487	35846	14364

Scales within brackets are extended scales.

Table No. 23
Distribution of Employees according to various Pay-Ranges

Pay Ranges (in Rs)	2000		2003		2006	
	No of Employees	% of Total	No of Employees	% of Total	No of Employees	% of Total
<i>1</i>	<i>2</i>	<i>3</i>	<i>4</i>	<i>5</i>	<i>6</i>	<i>7</i>
2440-40-2680-EB-50-3080-60-3680 (2900-65-3875)	9524	20.47	10355	21.46	10494	20.90
2650-50-2950-EB-60-3430-70-4130 (3250-75-4375)	2023	4.35	2042	4.23	1811	3.61
2900-60-3260-EB-70-3820-80-4620 (3600-85-4875)	7120	15.30	7078	14.67	6691	13.33
3100-70-3520-EB-80-4160-90-5060 (3900-95-5325)	10097	21.70	10790	22.37	11791	23.48
3450-80-3930-EB-90-4650-100-5650 (4300-105-5875)	6588	14.16	6471	13.41	7001	13.94
3725-90-4265-EB-100-5065-110-6165 (4650-115-6375)	1568	3.37	1609	3.33	1603	3.19
3975-100-4575-EB-110-5455-120-6655 (4950-125-6825)	1545	3.32	1791	3.71	1676	3.34
4250-110-4910-EB-120-5870-130-7170 (5400-135-7425)	716	1.54	850	1.76	1155	2.30
4500-120-5220-EB-130-6260-140-7666 (5750-145-7925)	728	1.56	751	1.56	737	1.47
4900-130-5680-EB-140-6800-150-8300 (6150-155-8475)	467	1.00	435	0.90	375	0.75
5100-140-5940-EB-150-7140-160-8740 (6500-165-8975)	1045	2.25	807	1.67	1113	2.22
5300-150-6200-EB-160-7480-170-9180 (6775-175-9400)	1627	3.50	1969	4.08	2044	4.07
5500-160-6460-EB-175-7860-190-9760	459	0.99	389	0.81	412	0.82
5750-175-6800-EB-190-8320-200-10120	115	0.25	145	0.30	188	0.37
5900-190-7040-EB-200-8640-225-10440	178	0.38	74	0.15	151	0.30
6100-200-7300-EB-225-8875-240-10795	214	0.46	158	0.33	143	0.28
6350-225-7700-EB-240-9380-250-11130	1169	2.51	1283	2.66	1464	2.92
6850-240-8290-EB-250-10040-260-11600	229	0.49	250	0.52	230	0.46
7750-250-9000-EB-275-10375-290-12115	232	0.50	279	0.58	268	0.53
8750-275-10400-EB-300-13100	265	0.57	373	0.77	330	0.66
10000-300-11800-EB-325-14075	104	0.22	118	0.24	131	0.26
10750-325-12700-350-14800	30	0.06	23	0.05	20	0.04
11750-375-13625-400-15625	35	0.08	52	0.11	50	0.10
13200-475-17000	5	0.01	NIL	0.00	3	0.01
Consolidated pay/fixed pay/other pay scales not identical with the pay scales of the Government of Meghalaya.	446	0.96	166	0.33	329	0.65
Total	46529	100	48258	100	50210	100

Scales within brackets are extended scales

Table No. 24
Distribution of employees according to Status and Age-Group

Status	18-22	23-27	28-32	33-37	38-42	43-47	48-52	53 and above	Date of Birth not stated
<i>1</i>	<i>2</i>	<i>3</i>	<i>4</i>	<i>5</i>	<i>6</i>	<i>7</i>	<i>8</i>	<i>9</i>	<i>11</i>
Gazetted	-	102	315	445	502	521	575	492	268
Non-Gazetted	435	2950	4953	5690	7111	5557	4075	3180	2414
Grade-IV	225	692	1141	1646	1831	1778	1338	961	1013
Total	660	3744	6409	7781	9444	7856	5988	4633	3695

Table No. 25
Group-wise Basic Pay Range Distribution of State Government Employees by District

Basic Pay Range (Rs)	West Garo Hills	East Garo Hills	South Garo Hills	West Khasi Hills	Ri-Bhoi	East Khasi Hills	Jaintia Hills	All Meghalaya
<i>1</i>	<i>2</i>	<i>3</i>	<i>4</i>	<i>5</i>	<i>6</i>	<i>7</i>	<i>8</i>	<i>9</i>
<u>GAZETTED A</u>								
6350 – 7000	76	42	12	33	23	90	36	312
7001 – 8000	93	41	18	40	28	192	83	495
8001 – 9000	61	25	18	37	44	223	65	473
9001 – 10000	41	20	10	37	24	221	42	395
10001 – 12000	76	17	10	29	33	302	87	554
12001 – 15000	36	3	3	12	11	154	32	251
15001 – 20000	21	-	-	2	-	34	18	75
20001 – 26000	2	-	-	-	-	23	-	25
Fixed Pay	-	-	-	-	-	3	-	3
Basic Pay Not Stated	4	1	6	-	-	29	3	43
Total	410	149	77	190	163	1271	366	2626
<u>GAZETTED B</u>								
5300 – 5800	10	4	4	2	3	14	1	38
5801 – 6350	4	2	1	2	2	16	4	31
6351 – 7000	6	7	4	7	15	50	8	97
7001 – 8000	25	8	8	16	19	109	15	200
8001 – 9500	13	4	1	16	10	103	9	156
9501 – 10000	5	1	-	-	-	17	1	24
10001 – 11000	5	1	-	-	-	25	3	34
Fixed Pay	-	-	-	1	-	2	-	3
Basic Pay Not Stated	-	-	1	1	-	7	2	11
Total	68	27	19	45	49	343	43	594
<u>NON-GAZETTED B</u>								
5300 – 5800	49	37	17	19	15	118	42	297
5801 – 6350	98	23	14	46	23	91	61	356
6351 – 7000	93	30	10	44	22	344	109	652
7001 – 8000	90	33	6	49	21	330	76	605
8001 – 9500	45	32	7	27	13	191	31	346
9501 – 10000	11	1	-	6	-	6	1	25
10001 – 11000	18	1	2	17	-	18	-	56
Fixed Pay	-	1	-	-	-	1	-	2
Basic Pay Not Stated	2	2	-	-	-	4	2	10
Total	406	160	56	208	94	1103	322	2349
<u>GROUP C</u>								
2650 – 3500	1161	306	161	971	284	2974	1074	6931
3501 – 4000	1309	612	289	526	390	2845	770	6741
4001 – 5000	2579	1351	542	1089	595	4216	1619	11991
5001 – 6000	1015	490	163	683	290	2392	882	5915
6001 – 7000	256	105	64	251	55	795	184	1710
7001 – 8000	84	14	27	103	17	220	44	509
8001 – 9000	23	6	5	27	-	28	4	93
Fixed Pay	1	-	37	8	-	12	1	59
Basic Pay Not Stated	4	12	2	4	-	34	12	68
Total	6432	2896	1290	3662	1631	13516	4589	34016
<u>GROUP D</u>								
2440 – 3000	781	393	184	376	349	2600	835	5518
3001 – 4000	873	460	128	578	286	2059	539	4923
Fixed Pay	11	16	3	16	2	58	38	144
Basic Pay Not Stated	13	4	2	3	-	16	2	40
Total	1678	873	317	973	637	4733	1414	10625
Grand Total	8994	4105	1759	5078	2574	20966	6734	50210

Table No. 26
Statement of the department-wise Distribution of the number of posts in position

Sl. No	Departments	No. of Posts in Position					Total
		Gazetted A	Gazetted B	Non-Gazetted B	Group C	Group D	
1	2	3	4	5	6	7	8
1.	Accounts	18	6	83	203	108	418
2.	Agriculture	326	21	110	1027	641	2125
3.	Animal husbandry & Veterinary	201	3	10	747	659	1620
4.	Arts & Culture	3	5	-	86	59	153
5.	Assembly Secretariat	21	11	5	165	211	413
6.	Boiler Inspectorate	2	-	-	5	2	9
7.	Border Areas Development	1	11	5	36	35	88
8.	Civil Defence & Home Guards	6	8	26	905	127	1072
9.	Civil Task Force	-	-	-	6	4	10
10.	Community & Rural Development	69	10	81	1001	134	1295
11.	Co-operation	25	40	8	131	69	273
12.	Economics & Statistics	20	-	38	135	37	230
13.	Education including NCC	322	9	558	7042	876	8807
14.	Election	1	-	7	125	51	184
15.	Electrical Inspectorate	2	-	1	19	14	36
16.	Employment	6	16	3	145	68	238
17.	Excise	3	10	21	251	22	307
18.	Fisheries	12	8	21	152	157	350
19.	Finance	24	-	1	2	-	27
20.	Forest	49	45	30	977	381	1482
21.	Food & Civil Supplies	6	21	5	177	51	260
22.	GAD, DC's office, Meghalaya Houses	5	4	7	520	492	1028
23.	Geology & Mining	35	1	3	136	98	273
24.	Governor's Secretariat	2	1	1	22	59	85
25.	Health	510	23	306	3190	2059	6088
26.	Housing	5	10	16	63	32	126
27.	Industries	69	2	6	215	139	431
28.	Information & Public Relations	2	13	2	120	47	184
29.	Jail	10	-	5	174	35	224
30.	Judicial including High Court	8	-	1	45	34	88
31.	Labour	3	13	2	54	38	110
32.	Land Records & Surveys	4	-	1	115	194	314
33.	Lottery	-	-	1	12	9	22
34.	Meghalaya Admn. Training Institute	-	-	1	8	8	17
35.	Planning	26	1	26	32	31	116
36.	Police	87	-	178	8845	340	9450
37.	Printing & Stationery	7	-	8	347	57	419
38.	Programme Implementation	8	-	3	11	3	25
39.	Public Health Engineering	97	28	190	1018	622	1955
40.	Public Service Commission	-	4	1	39	12	56
41.	Public Works Department	231	79	422	2416	1054	4202
42.	Registration	-	-	-	2	1	3
43.	Secretariat & Meghalaya State Law Commission	239	70	39	1070	510	1928
44.	Sericulture & Weaving	7	13	4	553	275	852
45.	Small Savings	-	-	-	5	1	6
46.	Social Welfare	42	5	11	385	111	554
47.	Soil Conservation	66	2	64	836	349	1317
48.	Sports & Youth Affairs	-	8	2	53	26	89
49.	Taxation	5	74	1	120	139	339
50.	Tourism	4	2	2	24	22	54
51.	Transport	9	3	3	151	56	222
52.	Urban Affairs	25	9	25	51	41	151
53.	Weights & Measures	3	5	5	47	25	85
	Grand Total	2626	594	2349	34016	10625	50210

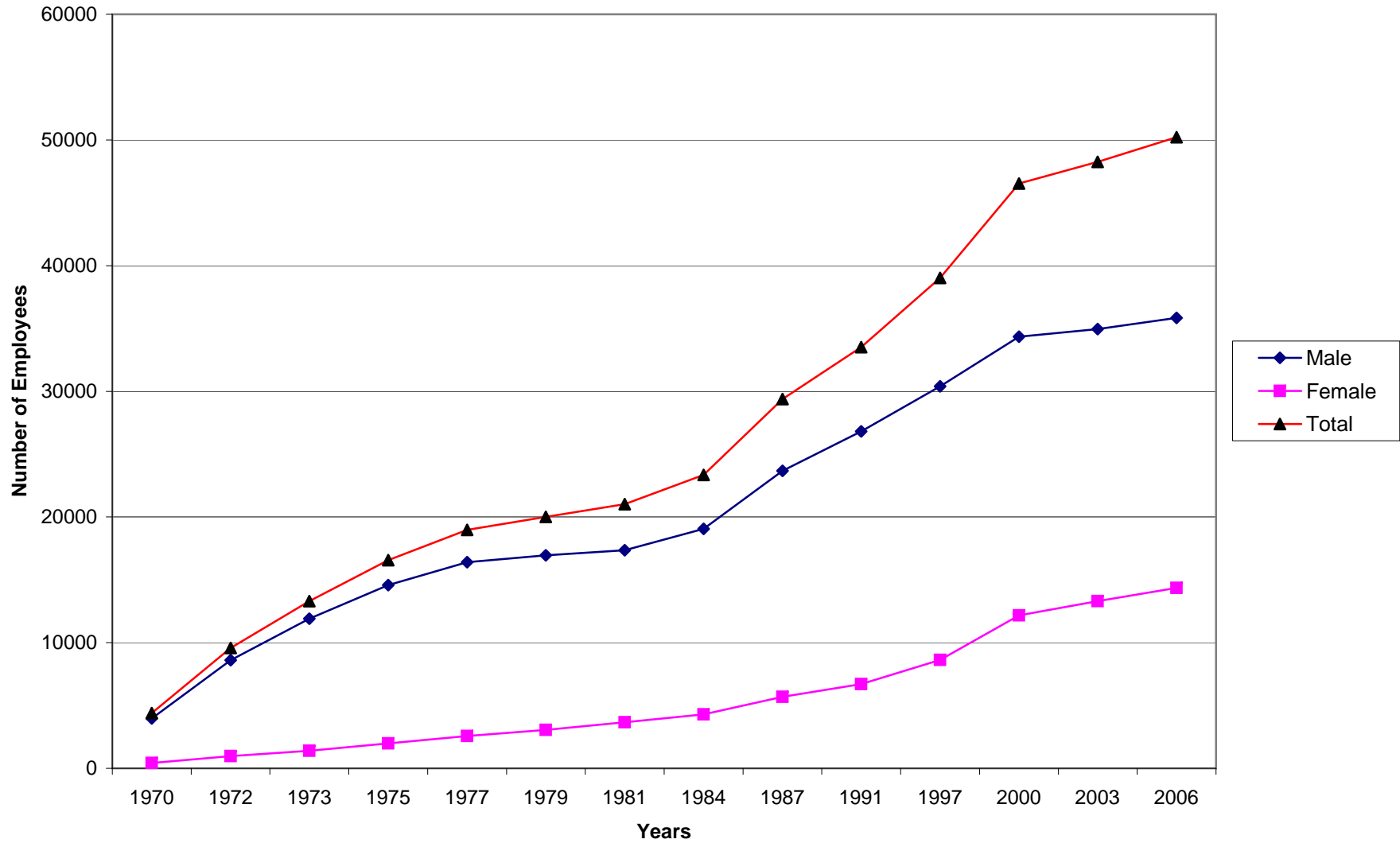
Table No. 27
Group-wise classification of Technical and Clerical Employees by Sex

Groups	Technical		Total	Clerical		Total	Grand Total		Total
	Male	Female		Male	Female		Male	Female	
<i>1</i>	<i>2</i>	<i>3</i>	<i>4</i>	<i>5</i>	<i>6</i>	<i>7</i>	<i>8</i>	<i>9</i>	<i>10</i>
Group A	1654	906	2560	20	46	66	1674	952	2626
Group B	1822	927	2749	93	101	194	1915	1028	2943
Group C	18497	5766	24263	5622	4131	9753	24119	9897	34016
Group D	560	122	682	7578	2365	9943	8138	2487	10625
TOTAL	22533	7721	30254	13313	6643	19956	35846	14364	50210

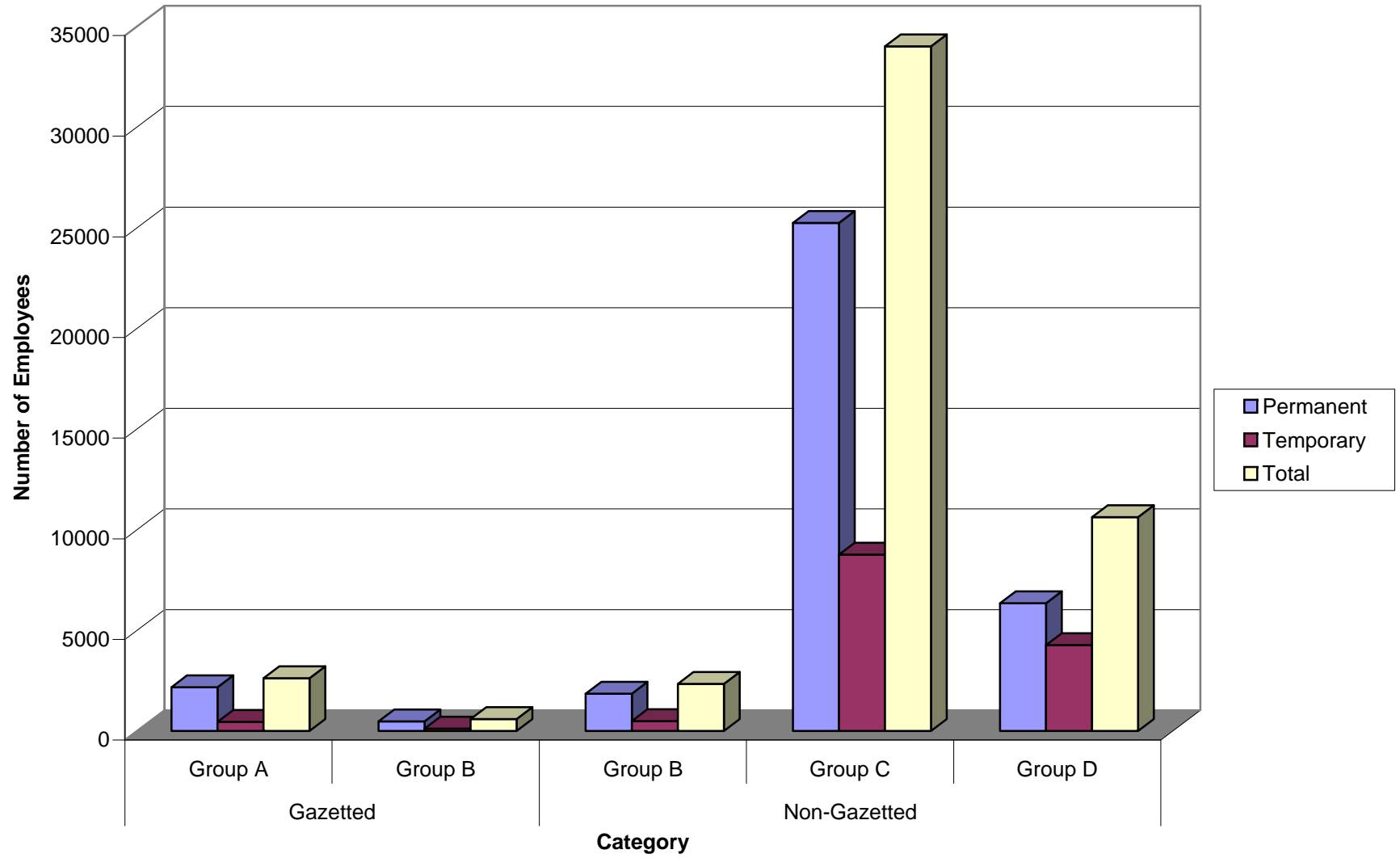
Table No. 28
Group-wise distribution of Employees according to Monthly Emoluments (in Rs)

Districts	Gazetted A	Gazetted B	Non-Gazetted B	Group C	Group D	Total
<i>1</i>	<i>2</i>	<i>3</i>	<i>4</i>	<i>5</i>	<i>6</i>	<i>7</i>
West Garo Hills	7217057	1049058	5500769	56524827	10602586	8,08,94,297
East Garo Hills	2418848	379921	1925331	25365557	5575466	3,56,65,123
South Garo Hills	1121841	254088	706985	10564021	2017069	1,46,64,004
West Khasi Hills	3031017	756981	2428635	25285370	6061130	3,75,63,133
Ri-Bhoi	2707242	698447	1264328	14338451	4159292	2,31,67,760
East Khasi Hills	23702872	4909915	14883939	124065351	30485269	19,80,47,346
Jaintia Hills	6301626	610772	4039845	40027689	8566913	5,95,46,845
All Meghalaya	46500503	8659182	30749832	296171266	67467725	449548508

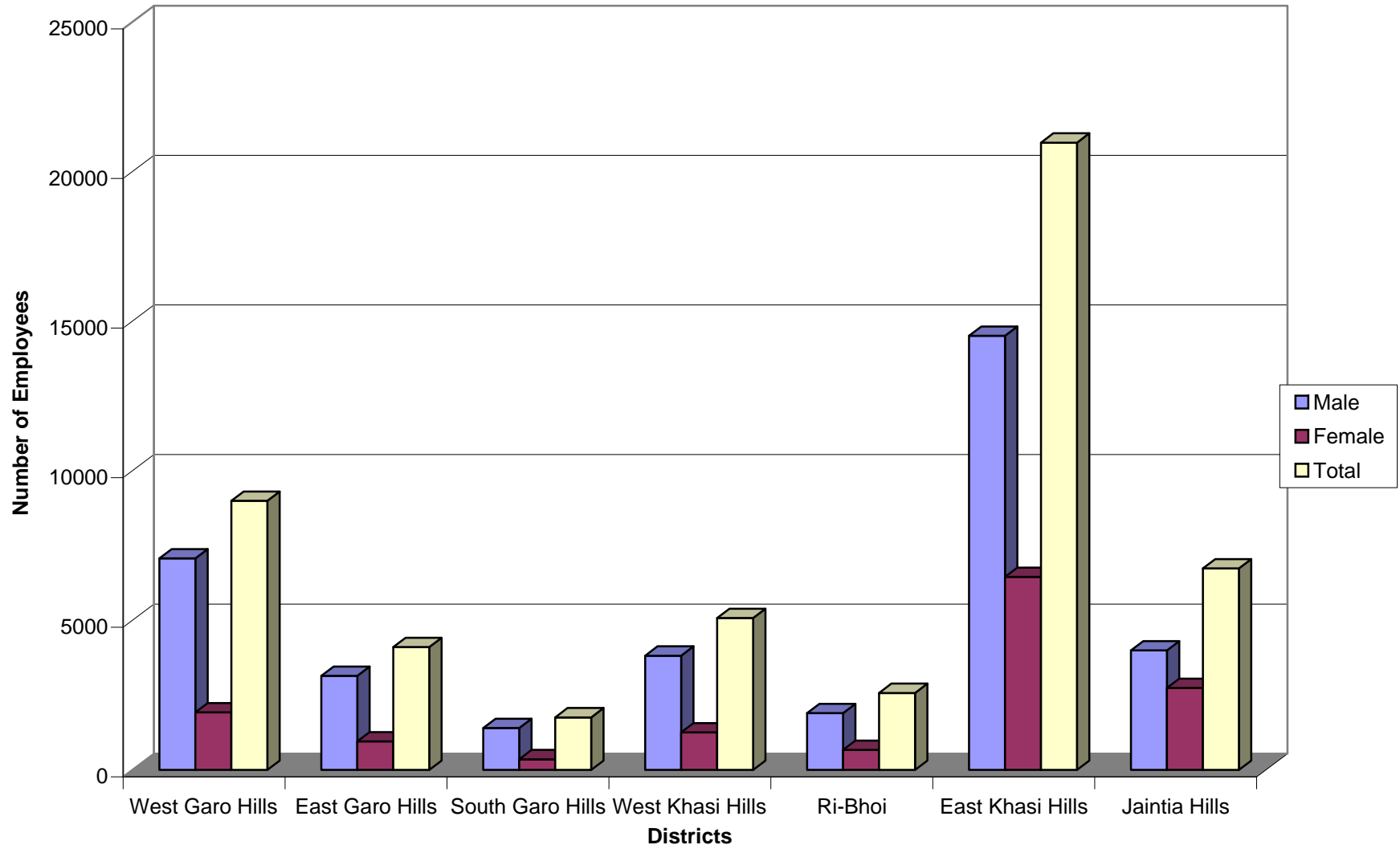
Trends in Meghalaya Government Employees



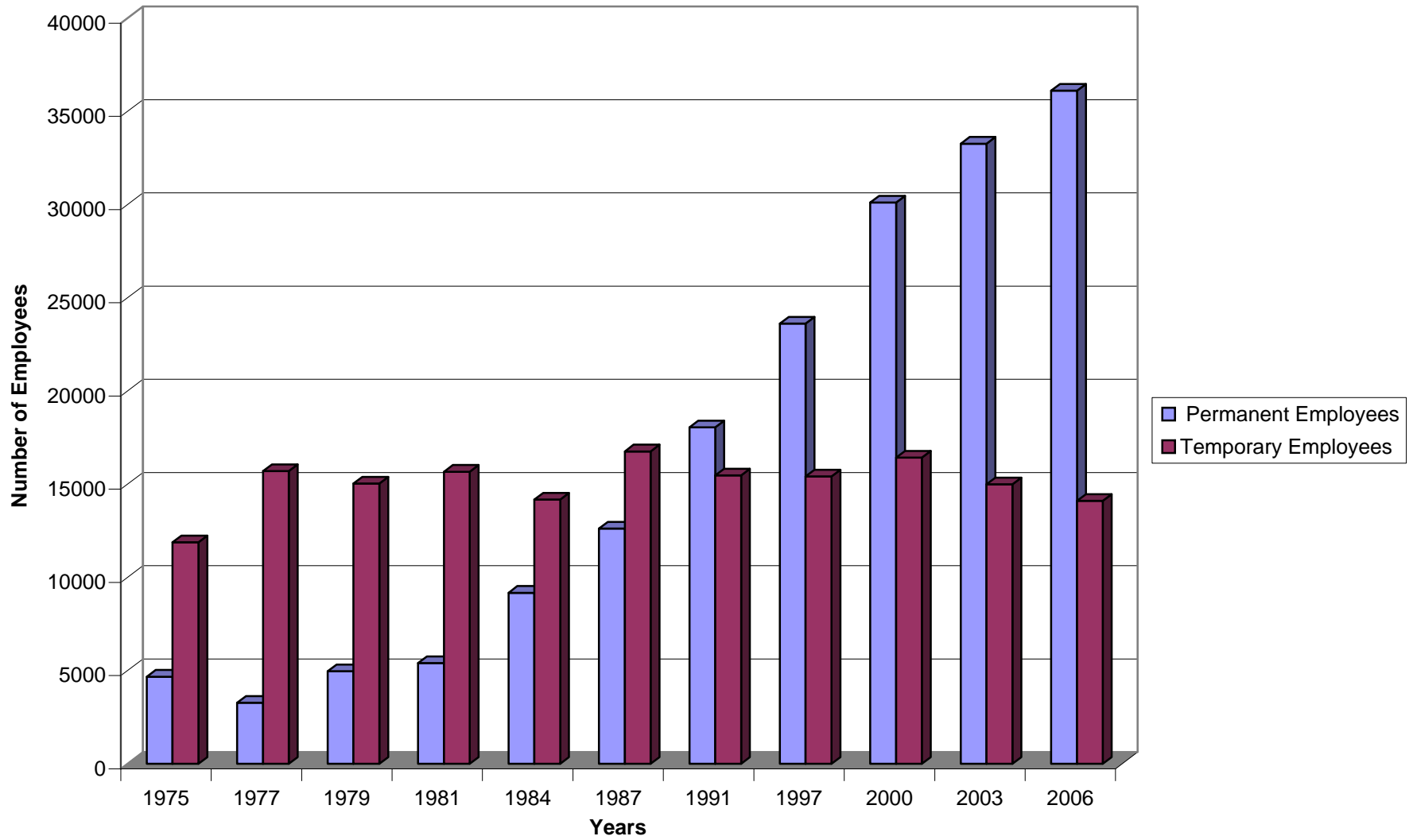
Number of Permanent and Temporary Employees According to Status



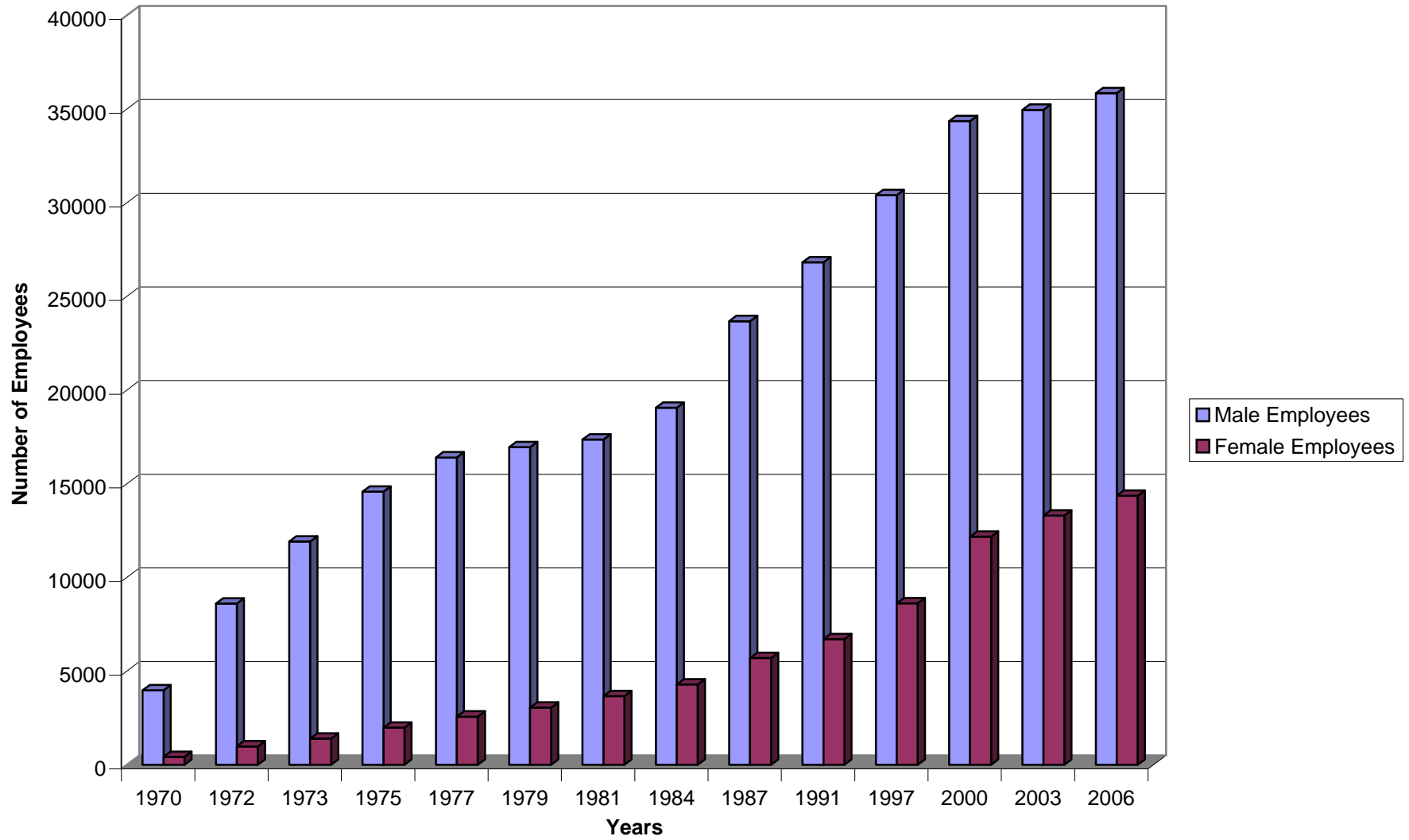
District-wise Break-Up of Employees



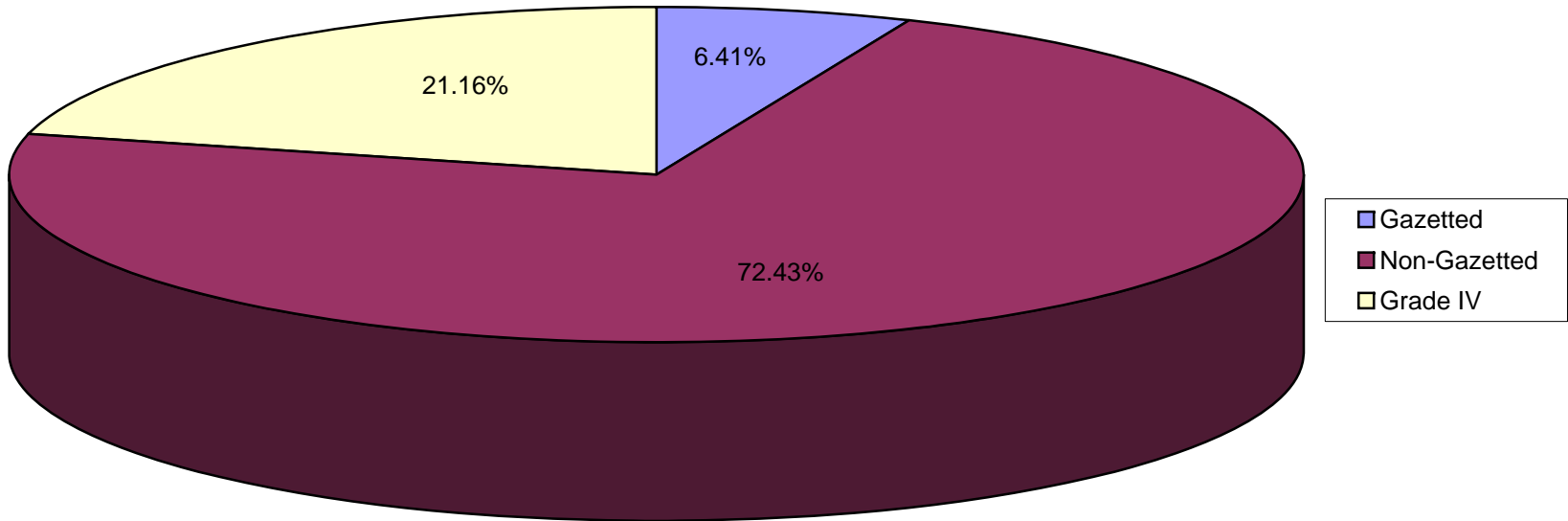
Temporary and Permanent Distribution of Employees



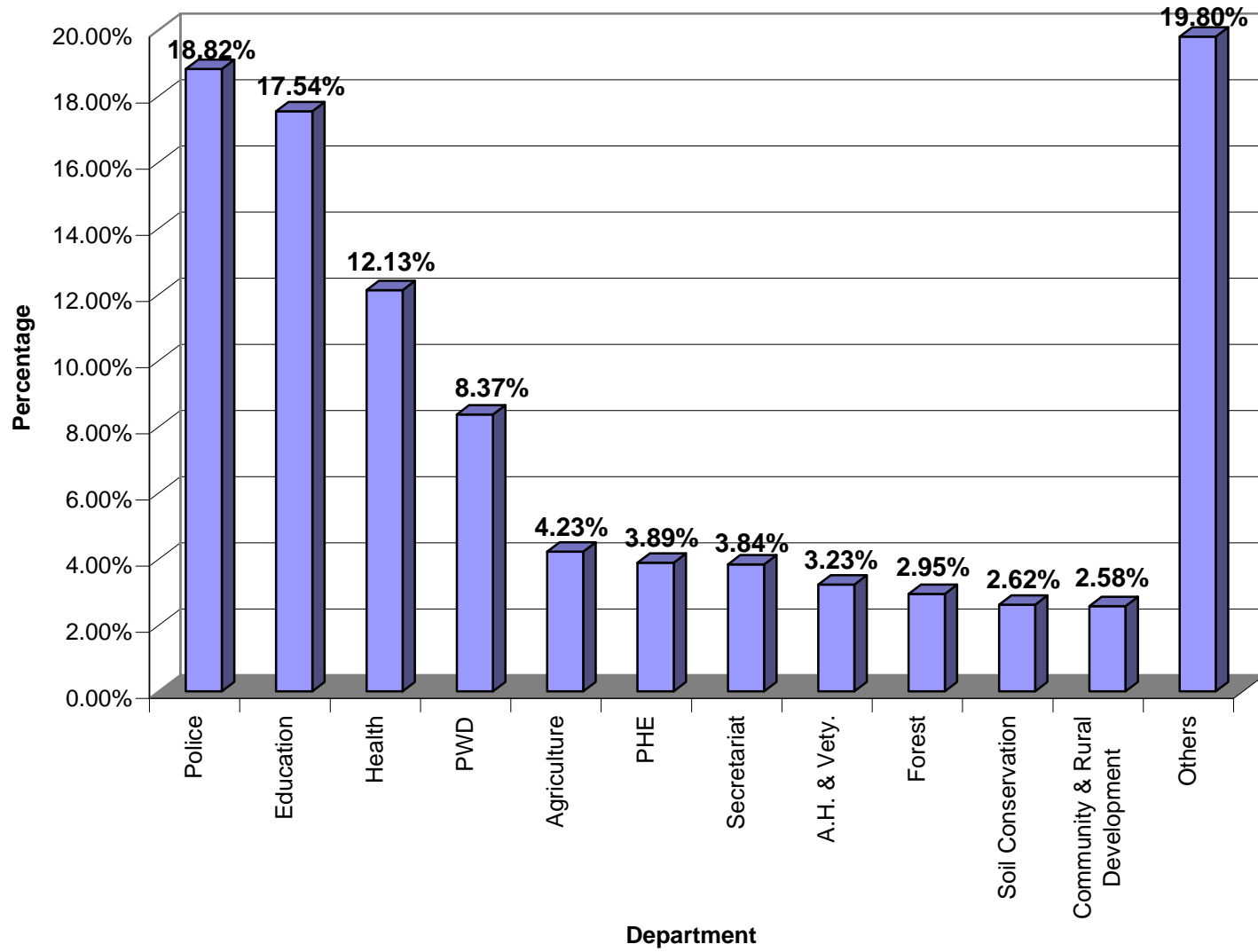
Trends in Meghalaya Government Employees by Sex



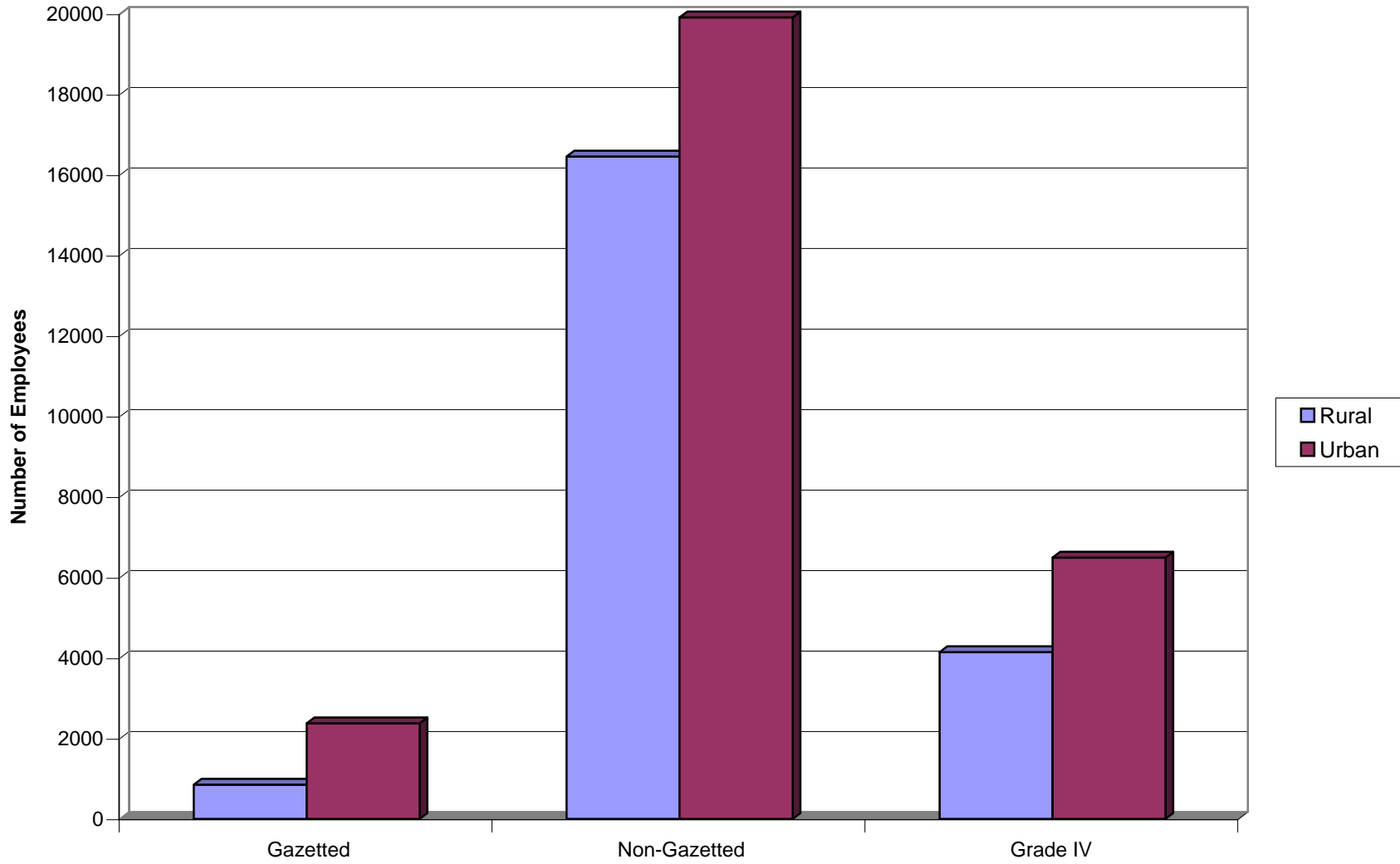
Classification of Government Employees According to Status



Distribution of Employees by Departments



Rural-Urban Distribution of Employees: By Status



Distribution of Employees According to Castes/Tribes

